



Guaranteed Income for 12 months of \$41,600.

Interest over \$775,000



**First National Byron
Bay**

Unrivalled design, quality and workmanship is evident throughout this 170m² ultra-modern architect designed complex of 6. Approximately 2 minutes from Byron Bays Main Beach and the ever popular shops and cafes that the lifestyle of Byron Bay has to offer. Offering light filled interiors with exquisite open plan living/dining areas merging to the alfresco terraces, set across 2 levels which offers a flexible floor plan, 2 generous size bedrooms both with ensuites the main with a spa. Large stylish open plan kitchen and double car accommodation.

This luxurious apartment has timber floors throughout, sleek stylish bathrooms, gourmet kitchen with Caesar Stone bench tops, stainless steel appliances with induction cooktop, glass splash backs, air conditioned, basement security parking.

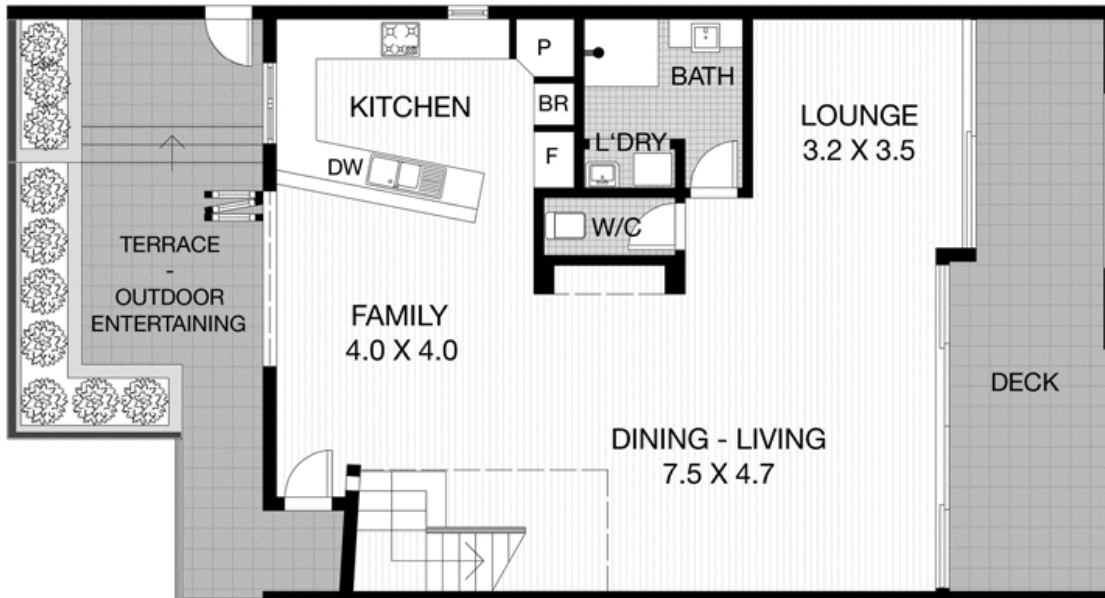


3/21 FLETCHER ST - BYRON BAY



FIRST FLOOR: 80 m2

STAIRWELL ENTRY



SECOND FLOOR: 90 m2

RESIDENCE INT. AREA: 170 m2

PRIORITY PLANS: © 2011 Chris Leo - 02 66879941 - P.o Box 99 Ballina NSW 2478
FLOOR PLAN INDICATIVE OF BUILDING LAYOUT AS ILLUSTRATION ONLY. NO LIABILITY ACCEPTED. ALL DIMENSIONS DISPLAYED IN METRES ARE APPROXIMATE.



First National Byron
The value of trust

3/21 Fletcher Street, BYRON BAY NSW 2481

Apartment: 2 beds 3 baths 2 park

