



Asian Inspired Residence!

Interest over \$999,000

Can you imagine waking each morning to the sound of your own private creek trickling over the rocks at the edge of your garden, then meandering gently off into the trees!!

With guaranteed privacy from all areas of this elevated home, you can enjoy complete relaxation in your own piece of paradise. From the gourmet kitchen to the sunken bath in the ensuite overlooking the rainforest, you feel like you have stepped into an oasis the moment you enter this amazing property.

Featuring four north facing pavilions, all with oversized sliding doors opening onto the full length sunny timber deck, the home is spacious, yet still creates a beautiful feeling of comfort and intimacy.

Just 10 minutes from the shopping precinct and beaches of Byron Bay, this home is set amidst two acres of lush gardens and fabulous tropical rainforest.

If you are looking for something a little different, perhaps conjuring up an image of "Bali in Byron", don't miss the opportunity to see this one.

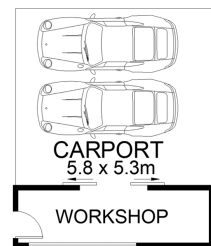
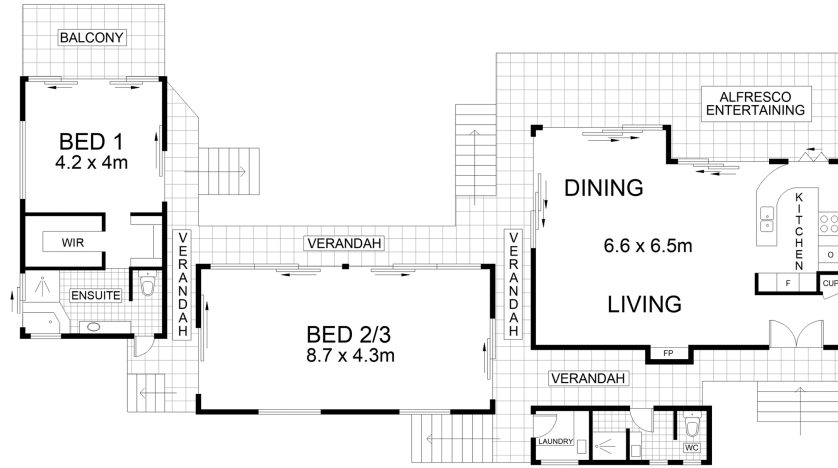
Additional Features include Solar hot water, rain tanks and town water access, home also has Photo Voltaic Cells, efficient in energy saving.



Helen Huntly-Barratt

Director | Sales

0412 332 232



Scale in metres. Indicative only. Dimensions are approximate. All information contained herein is gathered from sources we believe to be reliable. However we cannot guarantee its accuracy and interested persons should rely on their own enquiries.

INT : 130m²
CARPORT : 31m²
EXT : 90m²



18 Taylors Lane, Ewingsdale

