



Largest duplex lot available on the market in Suffolk Park!

\$479,000

Well presented duplex has full street frontage and is located in a peaceful cul de sac in Suffolk Park.
Set on 500m² of land, a very large block for a duplex.

The home features an open plan lounge/dining area and a large, modern kitchen with plenty of bench and storage space. The dining area opens out to the generous and private backyard with a covered, paved courtyard perfect for outdoor dining and entertaining. There is also a double lock up garage with internal access.

The bedrooms are light filled with built-in wardrobes. There is a modern bathroom, a separate laundry and an ensuite off the spacious main bedroom.

Located in close proximity to the lake, golf course and Tallow Beach.

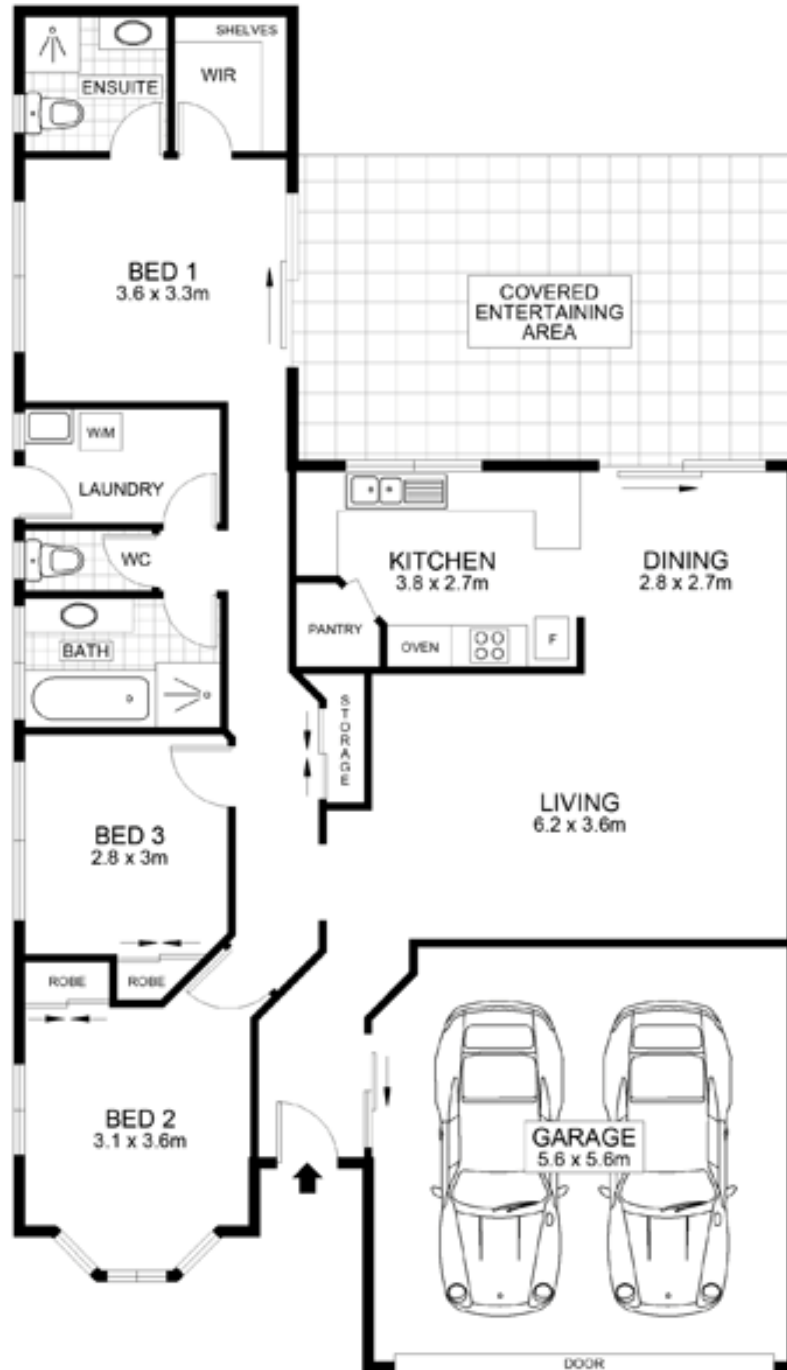
FEATURES:

Fully fenced for kids and pets
No Neighbour at rear



Su Reynolds

Director | Sales | Chief
Cultural Officer
0428 888 660



Scale in metres. Indicative only. Dimensions are approximate. All information contained herein is gathered from sources we believe to be reliable. However we cannot guarantee its accuracy and interested persons should rely on their own enquiries.

INT : 107m²
GARAGE : 33m²
EXT : 27m²



2/22 Redgum Place, Suffolk Park

Floor plan by www.topsnap.com 1300 867 762

