



## **BRUNSWICK HEADS**

Interest over \$599,000



**Su Reynolds**

Director | Sales | Chief  
Cultural Officer  
0428 888 660

Almost two houses in one! Tastefully renovated with loads of character. Situated on a 758m<sup>2</sup> block this large home has a perfect north-east aspect and is flooded with natural light and captures the sea breezes.

Upstairs has raked ceilings through the spacious open plan lounge kitchen and dining area. The floor to ceiling glass doors and windows provide plenty of light and the feeling of elevation sitting up amongst the trees.

The galley style kitchen has gas cooking, a dishwasher and good storage.

The 2 upstairs bedrooms are double bedrooms and have built-in robes.

The living areas open to wide covered verandas on both sides. The front veranda overlooks established trees and fruit trees and wraps around the north and east sides of the home. The back veranda off the kitchen is covered, protected and overlooks the large treed back yard.

Downstairs is almost another house of its own. With 3 bedrooms, high ceilings, bathroom, modern kitchen and covered deck space.

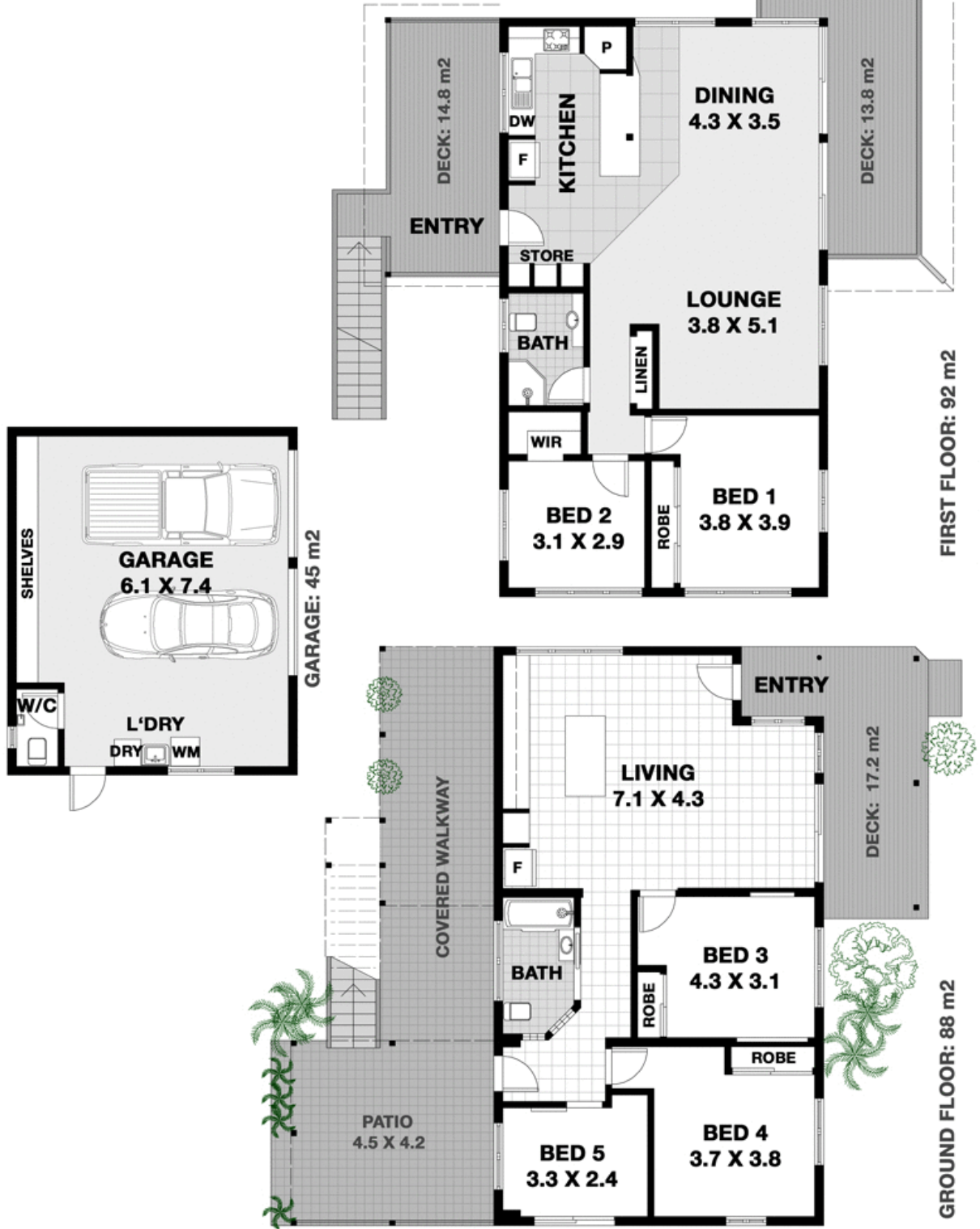
The home has been very well maintained. The exterior with stainless steel and timber balustrades and timber detail gives this home an architectural / beach house feel.

A large separate double garage and workshop with toilet is in the backyard.

Situated in a wide, established and quiet street only minutes' walk to Brunswick Heads shops and beaches. This home is so versatile. Ideal for a home plus income, holiday home, investment or a home for those needing plenty of guest accommodation or home work spaces.



4 BOWER STREET - BRUNSWICK HEADS



PRIORITY PLANS: © 2012 - 02 66879941 - Po Box 99 Ballina NSW 2478

\*Please note: This floor plan represents the current use of the property and does not claim to represent or confirm Council's approved plans and use of this property.

**RESIDENCE INT. AREA: 180 m<sup>2</sup>**

FLOOR PLAN INDICATIVE OF BUILDING LAYOUT AS ILLUSTRATION ONLY. NO LIABILITY ACCEPTED. ALL DIMENSIONS DISPLAYED IN METRES ARE APPROXIMATE.

