



Family home with separate studio

\$695,000 to \$735,000

A wonderful combination of light filled living, modern style and fabulous entertaining areas.

Recently renovated this home includes a modern airy kitchen with open plan dining and living room. East facing patios with an extensive deck area great for entertaining. There are three good sized bedrooms, 2 with built-in wardrobes.

Adjoining the home is a well appointed self contained studio with own separate entry and courtyard. Ideal for guests or home office.

The gardens are well established creating ample privacy. Fully fenced this fantastic property offers lots of options to both home owners and investors.

This home is a central but private location close to pre-schools, Shaz n Baz, Suffolk Park shops with the Green Garage Bakery and tavern, bike tracks and within walking distance to Tallow Beach, Suffolk Park.

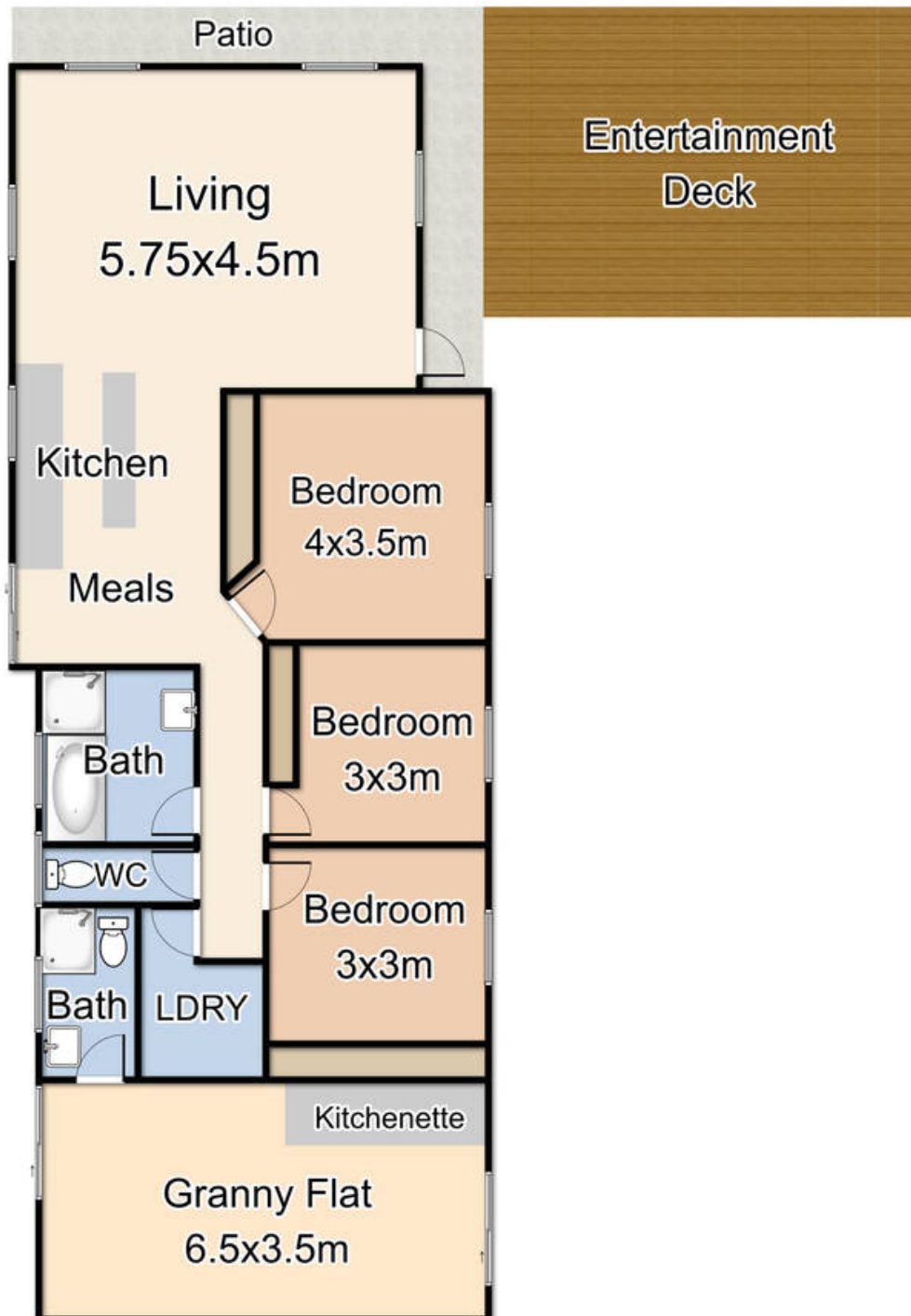
Currently tenanted with a 6 month lease in place \$800.00 per week

For further information or to arrange an inspection please call the agent.



Su Reynolds

Director | Sales | Chief
Cultural Officer
0428 888 660



45 Beech Drive, Suffolk Park





First National Byron
The value of trust

45 Beech Drive, SUFFOLK PARK NSW 2481

House: 4 beds 2 baths

