



## Beautiful Architect Designed Home + Private Guest Accommodation

\$1,050,000 to \$1,150,000

This architect designed home will captivate you with its extensive use of glass, flowing spaces and warm, natural materials. Add to that a layout that has been cleverly designed to accommodate large families or even 2 families, and you have harmonious living at its finest. There are even DA approved plans for a 5th bedroom.

The home is situated at the top of an elevated cul-de-sac with a pleasant north east aspect and views of Cape Byron Lighthouse over the treetops.

Glass louvres and floor to ceiling windows capture an abundance of natural light and enhance the indoor/outdoor feel. The attention to detail and quality craftsmanship was paramount in the building of this home.

First Floor;

- Open plan kitchen, living and dining flowing onto covered entertainers verandah
- Beautiful Tasmanian Oak kitchen with stainless steel appliances
- Master bedroom with private balcony, A/C, walk in robes and ensuite with spa bath
- Second bedroom and bathroom
- Tasmanian Oak timber floors
- High ceilings

Ground Floor;

- Large living room and bar facilities
- 2 bedrooms, bathroom and atrium style laundry
- High ceilings
- Covered veranda with separate patio
- Double garage with handy loft storage

Set on 653m2 with a level backyard, established trees and easy care



**Su Reynolds**

Director | Sales | Chief  
Cultural Officer  
0428 888 660



**First National Byron**  
The value of trust

**9 Mango Bark Court, SUFFOLK PARK NSW 2481**

House: 4 beds 4 baths 2 park

landscaping. The property adjoins a reserve which adds to the privacy.

The location is great as you can easily walk or ride your bike to shops, Tallow Beach, schools and the Golf Course.

This truly is an incredibly stylish, immaculate and quality home.

Please call or email us for further information.

ENQUIRIES: Su Reynolds 0428 888 660 or Luke Elwin 0421 375 635

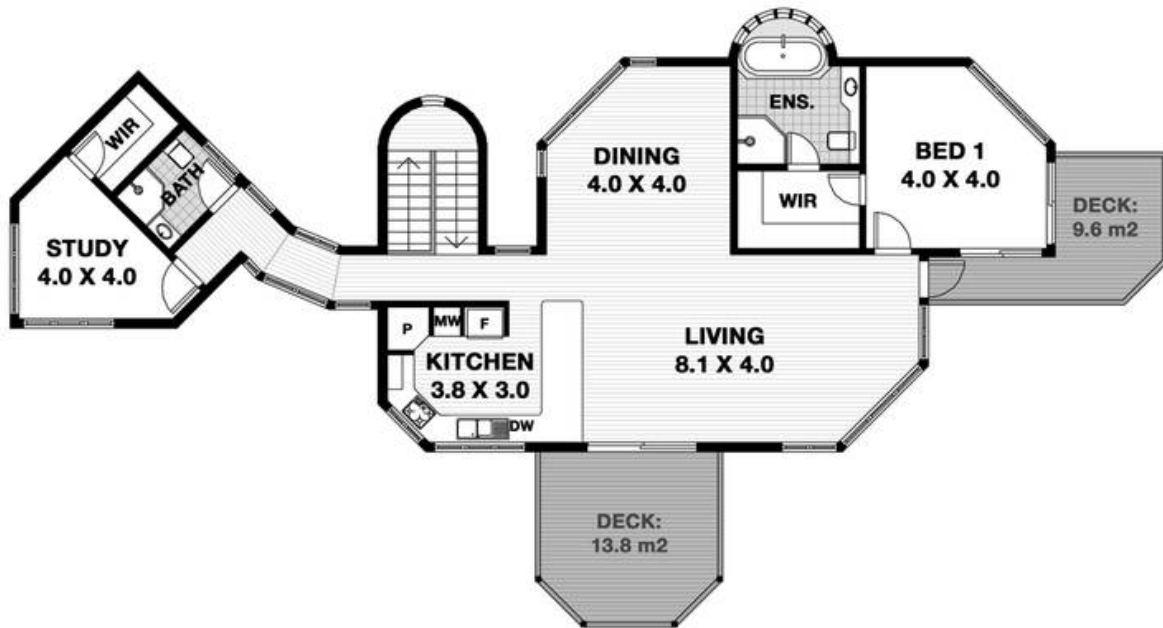


**first national**  
Byron Bay

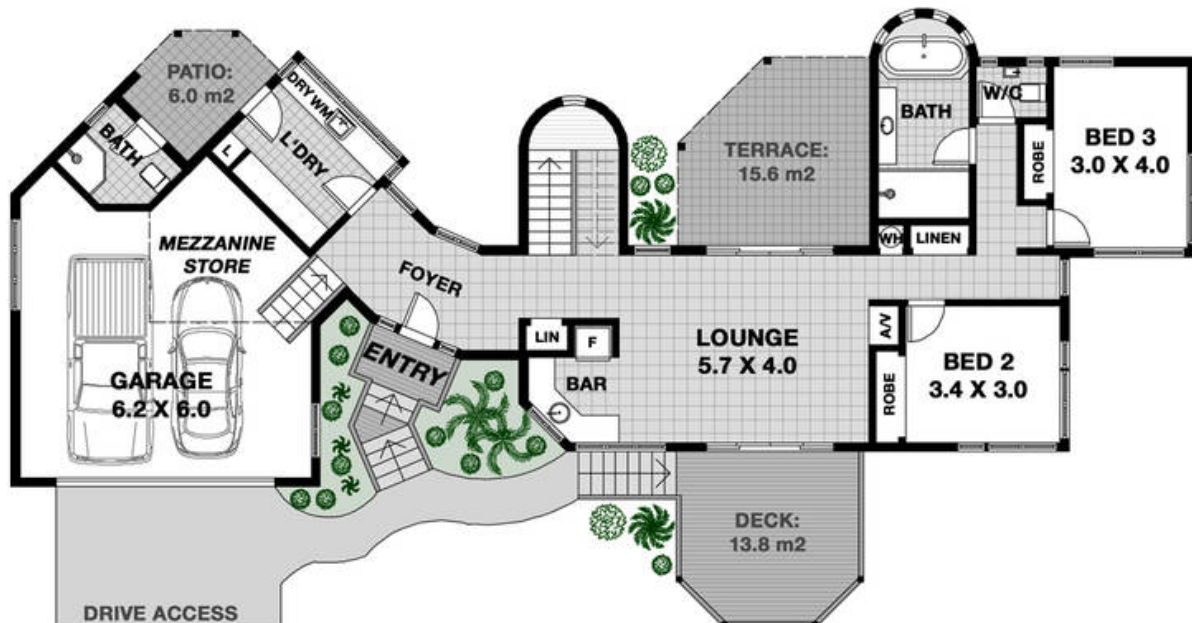
**9 MANGO BARK COURT - SUFFOLK PARK**



**FIRST FLOOR: 125 m2**



**GROUND FLOOR: 155 m2**



PRIORITY PLANS: © 2013 - 02 66879941 - Po Box 99 Ballina NSW 2478

\*Please note: This floor plan represents the current use of the property and does not claim to represent or confirm Council's approved plans and use of this property.

**RESIDENCE INT. AREA: 280 m2**

FLOOR PLAN INDICATIVE OF BUILDING LAYOUT AS ILLUSTRATION ONLY. NO LIABILITY ACCEPTED. ALL DIMENSIONS DISPLAYED IN METRES ARE APPROXIMATE.



**First National Byron**  
The value of trust

**9 Mango Bark Court, SUFFOLK PARK NSW 2481**

House: 4 beds 4 baths 2 park

