



River Frontage And Walk To Beach

\$795,000 to \$865,000

Only 250m from the path to South Golden Beach, and backing on to Yelgun Creek this home plus studio on 944m² has so much to offer.

Enter through a private courtyard in to the open plan living room and the view reaches straight through to the terraced rear yard to beautiful Yelgun Creek. The large kitchen has plentiful storage and connects with the living space to make this a great lifestyle home, perfect for families and entertaining.

The three bedrooms all have built-ins, and the master connects to the main, two-way bathroom.

In addition to the main house is a large connected studio with its own front door and access to the rear patio and yard. This is the perfect flexible space for extra accommodation, a huge rumpus, office, or art studio.

The established gardens are full of food plants, with several vege patches and trees including citrus, native finger limes, figs, grapefruit, avocado, grapes, blood orange and several more. All organised and planted for easy care and privacy. This is a wonderful garden for green thumbs and families.

To top all this off there is a double garage with storage and an attached workshop.

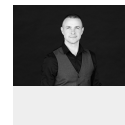
Don't miss the opportunity to view this home with everything it offers and potential for more.

Council Rates: \$2311.70 per year



Su Reynolds

Director | Sales | Chief
Cultural Officer
0428 888 660



Luke Elwin

Sales
0421 375 635



6 Barkala Court



INT: 192m²
EXCLUDES DECKS/PATIOS/BASEMENT

