



Exclusive & Private 3 Acres With Ultra-Modern Home

\$3.3m

A private and exclusive countryside haven surrounded by views of rolling grass hills and sounds of nature. Perfectly positioned 10 minutes from central Byron Bay, Brunswick Heads and Mullumbimby with a walk through the nature reserve to Tyagarah beach. A quick 5 minute drive to "The Farm" for a coffee or a quality meal.

The stunning architectural home sits on a hilltop 3 acres with a spring fed dam, fruit trees and herb garden. The property has the advantage of a low maintenance small acreage yet access to the use of an adjoining 20 acres. This is perfect for those who want the space (for horses or horticulture) without the maintenance.

The huge open plan kitchen and living room with soaring ceilings opens via double sliding glass doors to the 17m heated pool and outdoor entertaining areas. This unique home is wonderfully versatile as the ultimate entertainer and private, secure family residence.

Featuring 5/6 bedrooms in 2 separate wings, 3 bathrooms, separate guest accommodation, 3 car garage, and 3 large sheds.

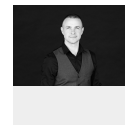
The home has been designed to flow with the area and the elements, keeping cool in summer and warm in winter. This quality, ultra-modern home has concrete filled Hebel brick walls and commercial grade glass doors and windows.

The lush established gardens are superb and surround the house and pool, designed by a landscape architect to be low maintenance and thrive in our semi tropical environment. The large, level and secure yard is connected to the living areas of the home providing a safe and free space for a family to play. The spring fed dam feeds the whole 3 acres of gardens, while the rainwater tanks feed the house with water. Mains water is also connected.



Su Reynolds

Director | Sales | Chief
Cultural Officer
0428 888 660



Luke Elwin

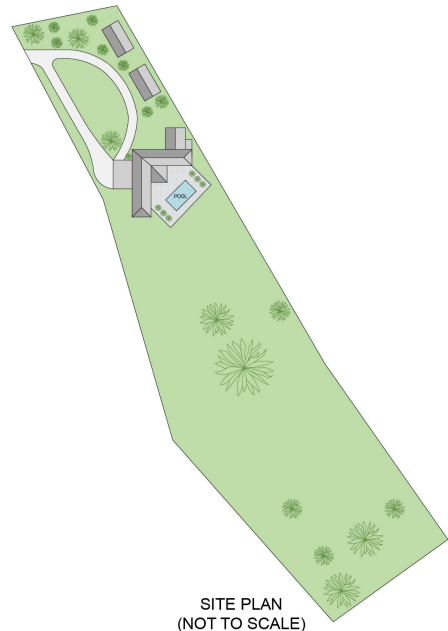
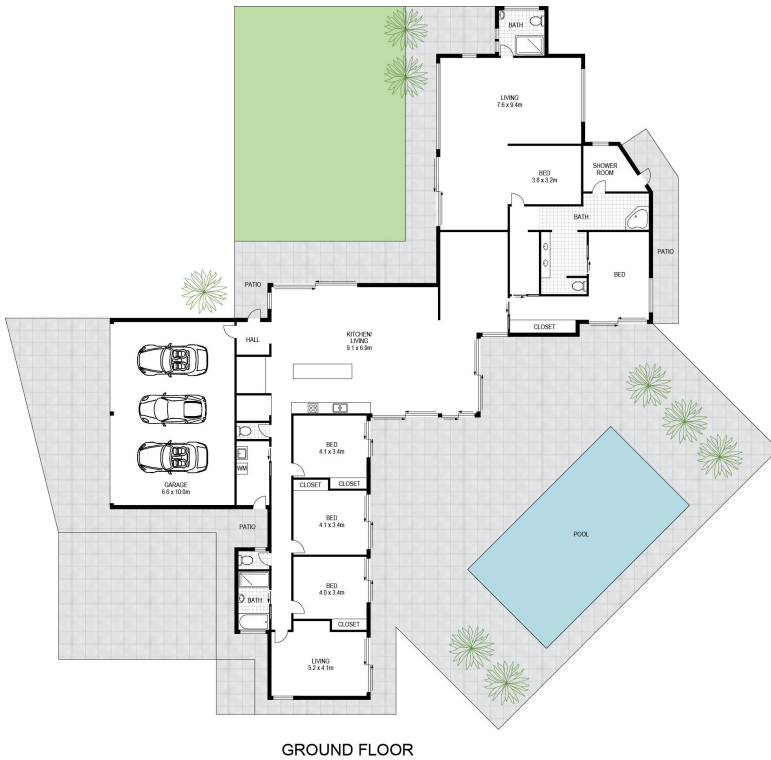
Sales
0421 375 635



This is the perfect family dream home or for those looking for the ultimate in privacy, style and a tree change and sea change all in one!

FEATURES INCLUDE

- Living & dining area with floor to ceiling glass & views from every angle
- Seamless indoor/outdoor living
- A/C & heating throughout plus gas fireplace
- Kitchen with Miele appliances & a hot, cold & mineral Zip Tap
- 17m heated salt water pool with self-regulating water balancing & new filtration
- Gated property with a high level of privacy
- Secluded tree filled front garden with level lawn, circular driveway & treehouse
- Garaging for 6 cars or more plus sheds & carports
- Visitors parking area
- Grapes, passionfruit, fruit trees & herb garden with abundant possibilities
- Large steam room off main ensuite



Internal: 348m²
Excludes all external structures
Eg: decks, patios, verandahs etc

5 3 3

130 GRAYS LANE

Scale in metres. Indicative only. All information contained herein is obtained from sources we believe to be accurate. We cannot guarantee its accuracy. Interested persons should make and rely on their own enquiries

