



Always wanted to live near the beach at an affordable price?

\$499,000

Well, here's an exceptional opportunity to secure a property in the highly popular Shaws Bay for under \$500,000.

Just a couple of minutes' stroll to Lighthouse Beach, the surf club and North Wall, this attractive unit is part of a small, well-maintained complex 'Aquarius' with an inground pool.

A spacious, tiled living area with high raked ceiling leads out to a private and sunny courtyard while the front door opens to a pleasant lawn and garden. Features include split system air conditioning and internal access to garage.

Shaws Bay is renowned for its walkways, bike paths, and the view over the ocean from the end of North Wall as well as the nearby cafes and Shawsie Hotel. Central Ballina is just a couple of minutes away by car.

Be quick to inspect and begin living your beachside dream in time for summer.

Council Rates: \$2340.49 per year

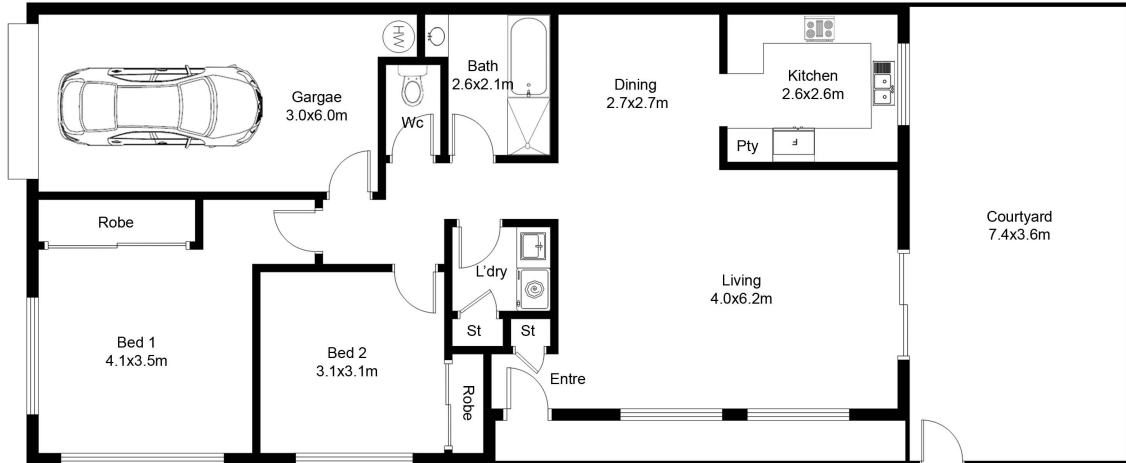
Strata: \$850 per quarter



First National Byron



first national
REAL ESTATE



This floor plan including furniture, fixture measurements and dimensions are approximate and for illustrative purposes only. Boxbrownie.com gives no guarantee, warranty or representation as to the accuracy and layout. All enquiries must be directed to the agent, vendor or party representing this floor plan.

Unit 1, 48-50 Cedar Crescent, East Ballina

