

Rare Entry Level Opportunity in Byron Bay.

\$755,555

This neat one bedroom, two level town house in sought after Jacaranda Drive represents a rare opportunity to get in to the Byron Bay market at the entry point. So few properties come to the market at this level, don't miss your chance on this one.

Perfect for the investor or first home buyer.

The property features a fenced front courtyard, car space on title, open plan kitchen, light filled living/dining and large bathroom with laundry space. The open floorplan flows generously through to a lush tropical backyard with well-established native flora and fauna.

Upstairs is the loft style bedroom with large skylight and additional storage space.

Located right next to a large park with kids play area, and an easy walk to the Sunrise shops, Tavern, and Sunrise Beach.

Council Rates: \$3,057.50 p/a

Strata: \$1,778 p/a



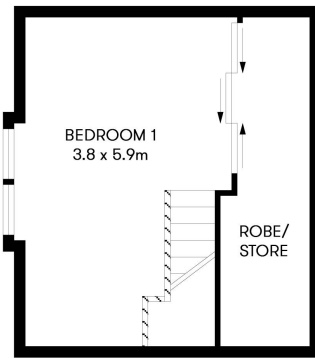
Paul Banister

Sales

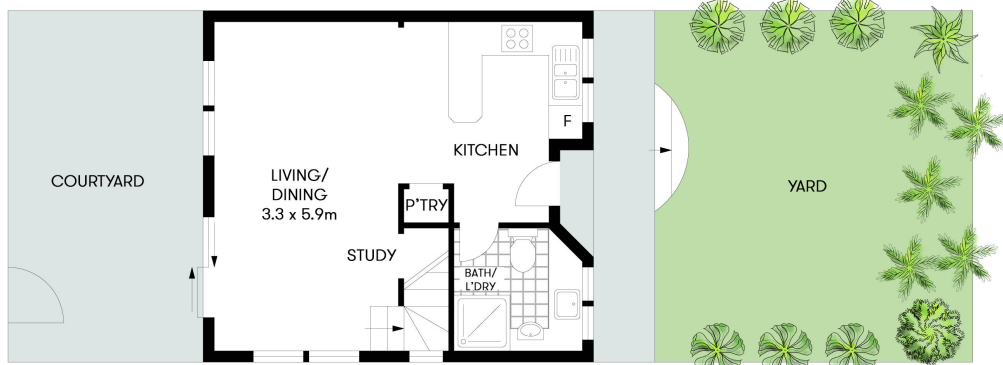
0438 856 552

Amenities

Built in Robes



FIRST FLOOR



GROUND FLOOR



3/18-20 JACARANDA DRIVE, BYRON BAY

INTERNAL: 75m² | EXTERNAL: 34m²

FIRST NATIONAL BYRON
YOUR HOME | YOUR LIFE | YOUR STORY

Scale in metres. Indicative only. All information contained herein is obtained from sources we believe to be accurate. We cannot guarantee its accuracy. Interested persons should make and rely on their own enquiries. This plan is a representation of the buildings on site and not an indication of council approval. Floorplan as illustration only – all figured dimensions approximate – do not scale – no liability accepted

