

## **Mediterranean Inspired Beachside Home - Adjoining Arakwal National Park**

\$2.7m - \$2.8m

Located in the much sought after MacGregor Street, within the equally desirable suburb of Suffolk Park, is this charming four-bedroom home and separate studio. With a Mediterranean-inspired design and less than 200m to the beach, this is the perfect place to experience a slower pace of life.

With high, raked ceilings and an abundance of sunlight, the main living space draws you in. The interior design is bright and relaxed, appropriate for its beachside location. A combined living and modern kitchen adjoins a dedicated dining space – the ideal place for family dinners.

The main bedroom is a peaceful retreat, with ensuite and sitting area opening onto a large private deck. The deck backs onto the picturesque Arakwal National Park with paths through to the Ti-Tree Lake and Broken Head. Another three bedrooms in the main house provide plenty of space for all the members of the family. The family bathroom is conveniently located in the centre of the property and has the same relaxed, Mediterranean-style design.

In addition to the main residence there is a beautifully designed one-bedroom freestanding studio offering additional space for guests or the opportunity to generate additional income. An ensuite and built in wardrobes ensure a comfortable stay.

With multiple outdoor spaces there are plenty of options for relaxing or hosting unforgettable gatherings with friends and family whilst listening to the sounds of the ocean. The main covered entertaining area transports you to the Mediterranean, with terracotta tiles and a brick fireplace – the perfect setting for alfresco dining. The addition of two outdoor showers means that you can truly embrace your new beachside lifestyle.

As well as being a 2 minute walk to the beach, this charming property is



### **Su Reynolds**

Director | Sales | Chief  
Cultural Officer  
0428 888 660



### **Renee Schofield**

Sales - Su Reynolds Team  
0400 028 594



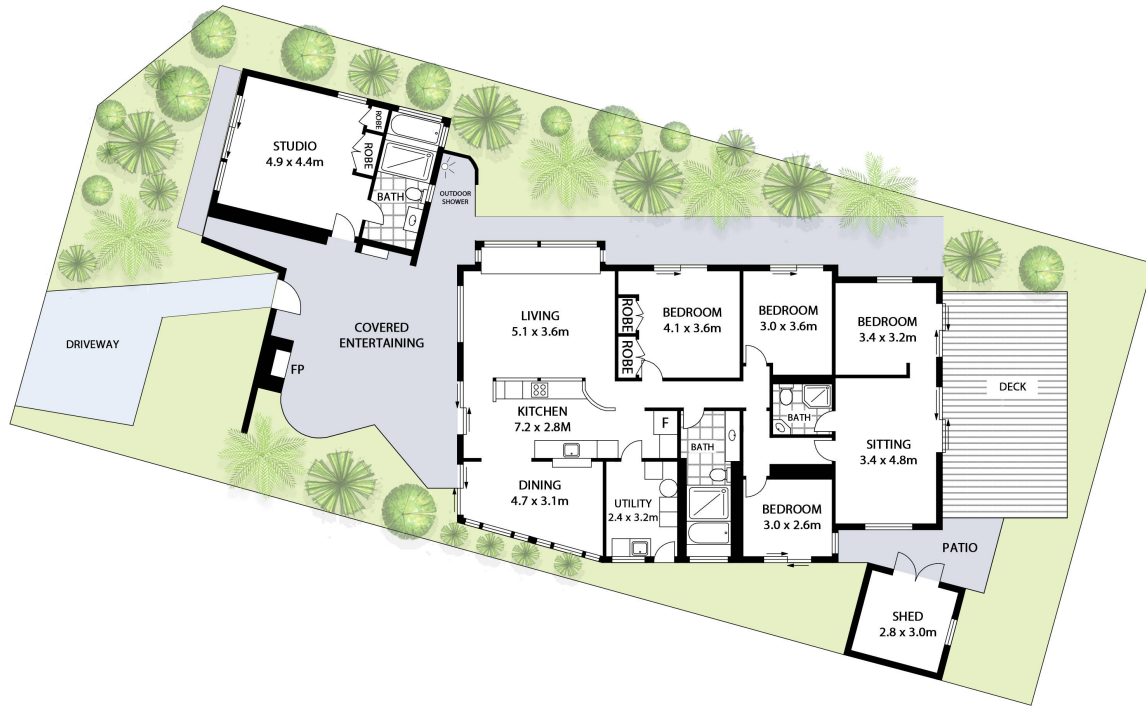
**First National Byron**  
The value of trust

**30 MacGregor Street, Suffolk Park NSW 2481**

House: 5 beds 3 baths

only a 2 minute walk to the Suffolk Park bakery and shops, and just 10 minute drive to Byron Bay. The protected Ti-Tree Lake area means that the rear views will never be spoilt. Don't miss this rare opportunity to own a private retreat in a remarkable location. Call Su or Renee now to organise an inspection.

Council Rates: \$4,748.80 p/a



**30 MACGREGOR STREET, SUFFOLK PARK**

**INTERNAL: 186m<sup>2</sup> | EXTERNAL: 91m<sup>2</sup>**

Scale in metres. Indicative only. All information contained herein is obtained from sources we believe to be accurate. We cannot guarantee its accuracy. Interested persons should make and rely on their own enquiries. This plan is a representation of the buildings on site and not an indication of council approval. Floorplan as illustration only – all figured dimensions approximate – do not scale – no liability accepted

