



Beachside Duplex in Desirable Lennox Head

\$1.175m - \$1.25m

Situated just one street away from the golden sands of Seven Mile Beach is this spacious, modern duplex where you can hear the rolling waves of the ocean from this fantastic, beachside home.

This property offers a spacious layout split over two levels. The lower level comprises two of the three spacious bedrooms, each with new carpet and built in robes. In addition to a large bathroom, there is laundry and single lock up garage on this level.

Polished timber stairs lead you to the upper level where you are greeted by a light filled, open plan layout. The modern kitchen features ample storage space and a thoughtful design. Adjoining the kitchen is the living and dining areas which open through large sliding doors onto the enormous covered balcony providing an extra living space – a perfect place to enjoy your morning coffee whilst listening to the sounds of the ocean.

The main bedroom is located upstairs and features a large built-in wardrobe and ensuite making it the perfect, private main suite.

Located in a highly sought after position in Lennox village, this home is just one street away from Seven Mile Beach, a few minutes walk to Lake Ainsworth and only a short walk to the main hub of Lennox where you can enjoy cafes and restaurants, as well as boutique retail stores. Only 20 minutes to Byron Bay and 19 minutes to Ballina Byron Gateway Airport.

* Access through Cliff Murray Lane

This is a rare opportunity to own one of these beautiful townhouses. Contact Su or Renee today to arrange an inspection of this incredible Lennox Head offering.

Council Rates: \$2761 pa



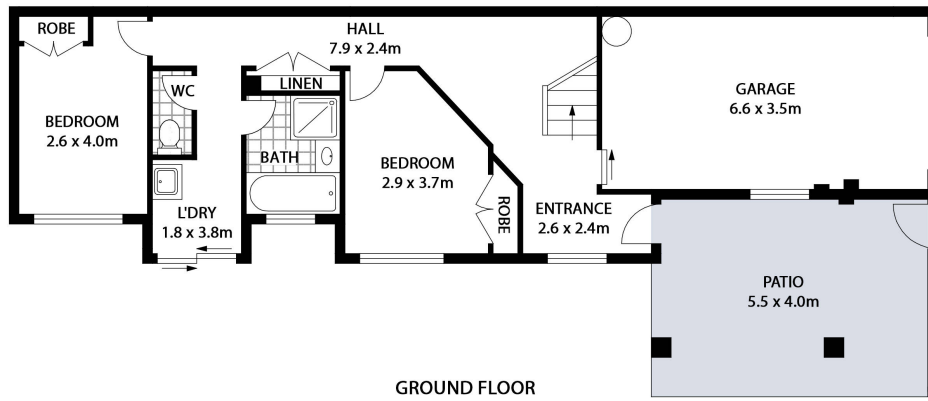
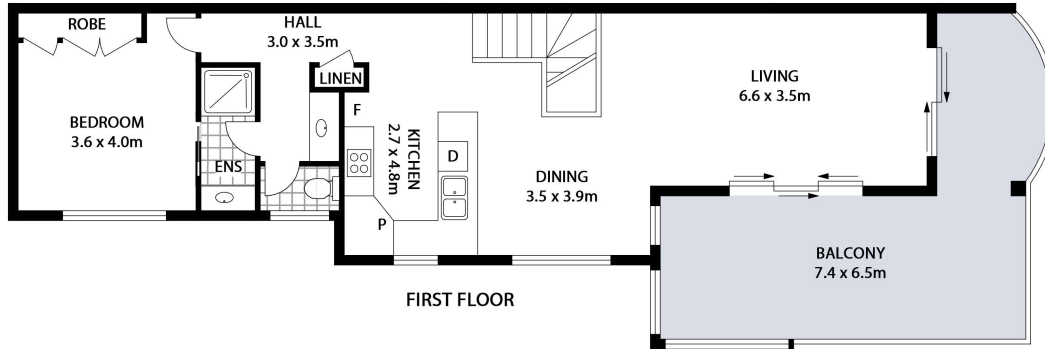
Su Reynolds

Director | Sales | Chief
Cultural Officer
0428 888 660



Renee Schofield

Sales - Su Reynolds Team
0400 028 594



3/75 STEWART STREET, LENNOX HEAD

INTERNAL: 153m² | EXTERNAL: 51m²

FIRST NATIONAL BYRON
YOUR HOME | YOUR LIFE | YOUR STORY

Scale in metres. Indicative only. All information contained herein is obtained from sources we believe to be accurate. We cannot guarantee its accuracy. Interested persons should make and rely on their own enquiries. This plan is a representation of the buildings on site and not an indication of council approval. Floorplan as illustration only – all figured dimensions approximate – do not scale – no liability accepted

