

## 37 Acre Ranch with farmhouse, bails, stables & tennis court just minutes to Clunes Village and 30 mins to Byron Bay

Contact Agent

Welcome to Tintagel – two dwellings, tennis court and spring fed dam approx 35min to Byron Bay world class beaches. When you walk onto this truly special property there is so much history to explore.

Enter a stoned driveway to this circa 1900's 3-bed farmhouse, featuring crows-ash flooring, tongue & groove walls & ducted heating. Rural views overlooking the idyllic spring fed dam, jetty and full-size tennis court with new lighting for night-time tennis tournaments. The property was originally part of the Corndale Tennis Club where locals say they use to play back in the 70's.

The original dairy bails are ideal guest accom or multi-generational living/studio including bedroom, lounge room, bathroom and historic red brick flooring, carport, new roof and separate electricity.

### Features:

- All dwellings freshly painted inside and out
- New 80m<sup>2</sup> barn style shed with 5.5m apex
- New 135,000ltr tank servicing the house and bails
- 10,000ltr tank servicing stables
- Irrigation taps throughout the property fed from the springs
- New Puratec G7 Hybrid Water Filters on house and bails
- Custom motorised barn-style timber/alloy gate with security system
- Custom railway sleeper & steel bridges across creek for full access for machinery
- 2 stables and 2 carports for floats/machinery and grassed arena
- Driveway up hill to a further building site (STCA) with exceptional views
- Wildlife sightings include wallabies, echidnas, turtles, koalas, platypus and native birds
- Fruit and citrus trees: oranges, mandarins, custard apples, grapefruit,



**Sharon McInnes**

Sales  
0408 659 649



**Paul Prior**

Sales  
0418 324 297



**First National Byron**  
The value of trust

**85 Arthur Road, Corndale NSW 2480**

House: 4 beds 2 baths

mangos, mulberries, lemons, pear, almond, lychees

35min to Ballina Airport

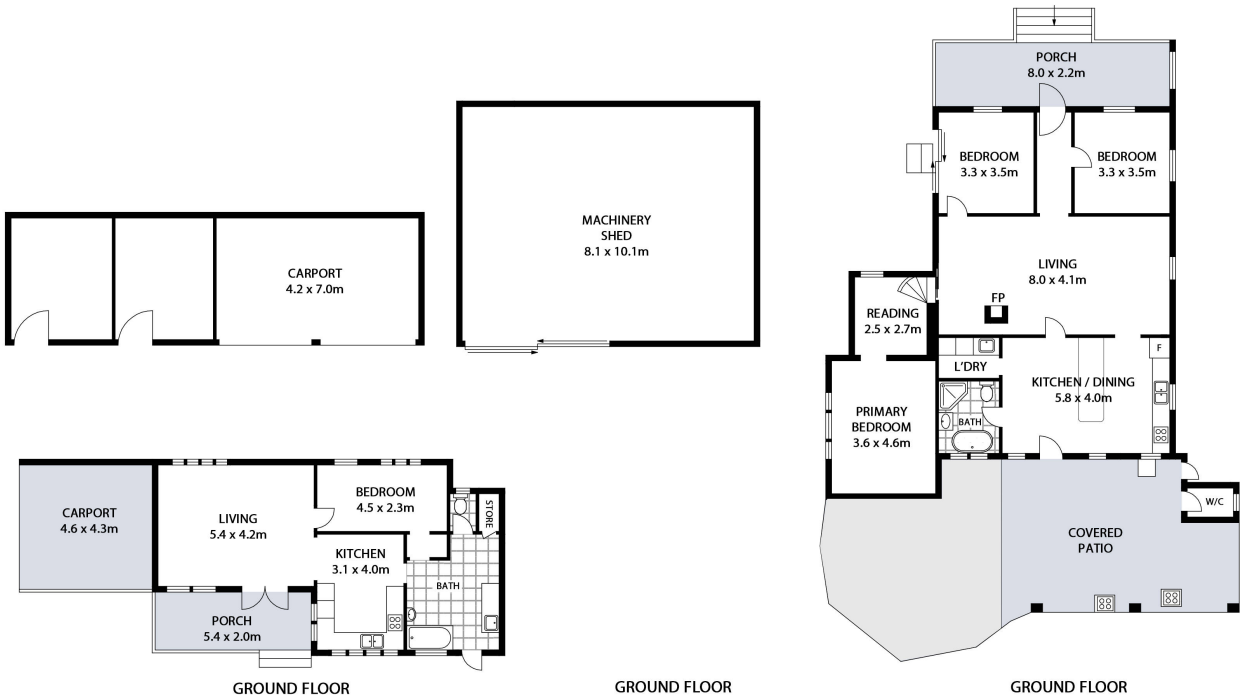
1hr Gold Coast Intl Airport

5min to Clunes Village

20min to Bangalow

35min to Byron Bay

"Agent declares interest"



**85 ARTHUR ROAD, CORNDALE**

**INTERNAL: 240m<sup>2</sup> | EXTERNAL: 148m<sup>2</sup>**

Scale in metres. Indicative only. All information contained herein is obtained from sources we believe to be accurate. We cannot guarantee its accuracy. Interested persons should make and rely on their own enquiries. This plan is a representation of the buildings on site and not an indication of council approval. Floorplan as illustration only – all figured dimensions approximate – do not scale – no liability accepted

