



Luxury Beachside Retreat

\$2.9M - \$3.1M

Located just a few minutes from the popular Tallows Beach is this modern and spacious four-bedroom home. The property benefits from expansive, manicured gardens and pool and has been stunningly designed to provide the ultimate luxury retreat. The property is fantastically positioned in the vibrant area of Suffolk Park – one of Byron Bay's most desirable suburbs located less than ten minutes from Byron Bay town centre.

This property has been exquisitely designed and maintained at the highest standard. At the heart of the home is an open plan living and kitchen space. The modern space is filled with an abundance of natural light thanks to the large sliding timber doors and recessed skylights. The stunning kitchen features a marble island bench and splash back complete with modern European appliances. The fridge and freezer are built-in, contributing to the sleek, designer look with a designated drinks area complete with two drinks fridges for your entertaining needs.

The property has four spacious bedrooms, each with built in wardrobes, air conditioning, fan, TV port and plantation shutters. The main bedroom benefits from a walk-in wardrobe and a beautiful ensuite bathroom with industrial style fittings and large walk-in shower. The property has two luxury designed and fitted bathrooms, catering for many guests or extended family members.

The outdoor areas are equally designed to cater for as many guests as desired. The open plan living space extends through large timber doors to an alfresco dining area with outside kitchen space including a barbecue and drinks fridge.

The gardens have been thoughtfully zoned and lit to provide an array of opportunities for socialising or relaxing whilst listening to the sounds of the ocean. The large pool and cabana provide the perfect setting for relaxing on those summer days, whilst the fire-pit provides the perfect



Renee Schofield

Sales - Su Reynolds Team
0400 028 594



Su Reynolds

Director | Sales | Chief
Cultural Officer
0428 888 660

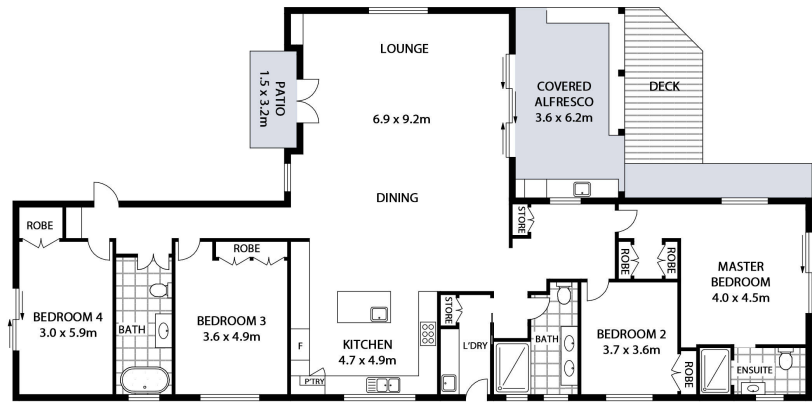


setting for the cooler months.

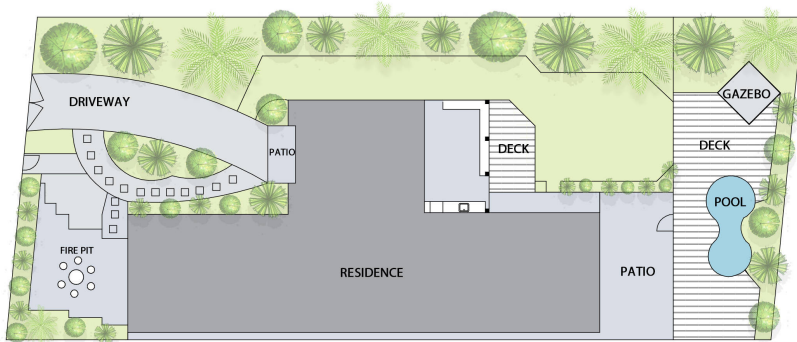
Suffolk Park is home to an array of amenities, including the popular Suffolk Bakery, post office and multiple restaurants. It also offers a fantastic base from which to explore many of the region's most beautiful natural sights. The property is turn-key ready and presents an excellent opportunity to move in or invest, in a sought-after neighbourhood.

This serene retreat is ready and waiting for its new owners. Call now to arrange an inspection.

Council Rates: \$4,861.80 p/a



GROUND FLOOR



SITE PLAN
(NOT TO SCALE)



57 ARMSTRONG STREET, SUFFOLK PARK

INTERNAL: 286m² | EXTERNAL: 242m²

FIRST NATIONAL BYRON
YOUR HOME | YOUR LIFE | YOUR STORY

Scale in metres. Indicative only. All information contained herein is obtained from sources we believe to be accurate. We cannot guarantee its accuracy. Interested persons should make and rely on their own enquiries. This plan is a representation of the buildings on site and not an indication of council approval. Floorplan as illustration only – all figured dimensions approximate – do not scale – no liability accepted

