

Lilli Pilli Home Minutes from Byron Bay

\$1.595m - \$1.695m

This attractive home is set on a generous 853m² block backing onto tranquil bush land, ideal for those seeking space, privacy and to make the most of our relaxed indoor/outdoor lifestyle.

Close to Tallow Beach, local schools, the Roadhouse café and only a short 5-minute drive to Byron Bay's Town Centre and world-renowned beaches. This area offers you privacy and seclusion within a short distance to the main attractions of our beautiful Byron Shire.

With high cathedral ceilings in the living room, large windows and sliding doors the home is connect indoor to the outdoors seamlessly.

Timber floors are mirrored by gorgeous exposed wooden beams and the kitchen offers ample storage space, with a breakfast bar and views to the garden.

The dining area opens out to a separate undercover entertaining area, there are three access points to the covered outdoor areas making this home perfect for those who are seeking the indoor/outdoor living experience.

Featuring 4 bedrooms and 2 bathrooms this home is perfect for growing families. The main bedroom is an ideal parent's retreat, with a large walk-in wardrobe, ensuite, and private access to the third undercover outdoor area which overlooks the lush green yard and acres of bushland. The family bathroom features a large spa bath.

With space and privacy, this home offers you a peaceful sanctuary to call home, all within a ten-minute bike ride into Byron's towns centre and pristine beaches, you are amongst all Byron Bay has to offer.

Contact Su Reynolds to arrange an inspection today.



Su Reynolds

Director | Sales | Chief
Cultural Officer
0428 888 660



Renee Schofield

Sales - Su Reynolds Team
0400 028 594

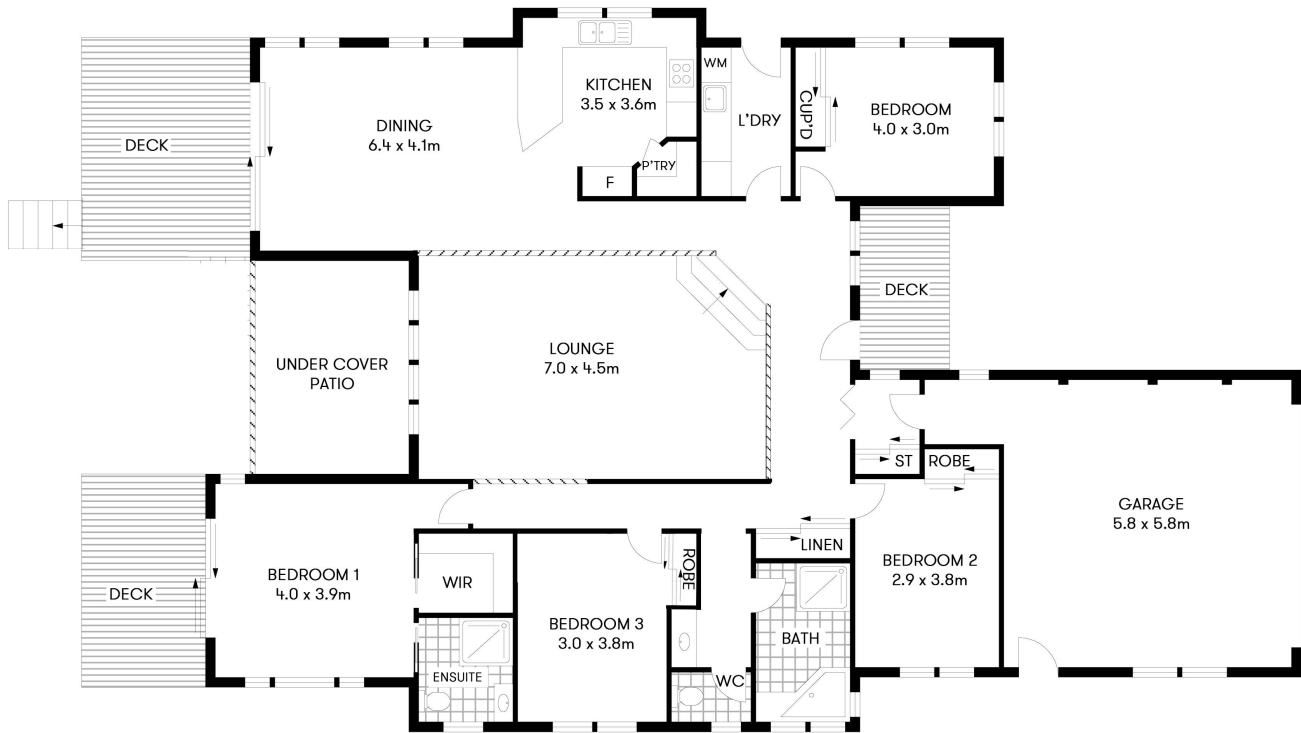


First National Byron
The value of trust

16 Blueberry Court, Byron Bay NSW 2481

House: 4 beds 2 baths 2 park

Council Rates: \$4,076 p/a



GROUND FLOOR



16 BLUEBERRY COURT, BYRON BAY

INTERNAL: 230m² | EXTERNAL: 33m²

Scale in metres. Indicative only. All information contained herein is obtained from sources we believe to be accurate. We cannot guarantee its accuracy. Interested persons should make and rely on their own enquiries. This plan is a representation of the buildings on site and not an indication of council approval. Floorplan as illustration only – all figured dimensions approximate – do not scale – no liability accepted

