



Blue Chip Location Three Bedroom Townhouse directly opposite Belongil Beach

\$1.75M - \$1.92M

Amazing opportunity in tightly held Belongil. Just metres from the beach is this spacious and bright three bedroom townhouse. This is a perfect investment property where you can have as a holiday home all year round or permanent residence for your family!

Set over two levels with the living on the ground floor the open-plan space spans the length of the property, with sliding doors on both sides allowing an abundance of daylight. Fully renovated kitchen with high-end appliances overlooking greenery offering a bar seating area. And further entertaining in the private courtyard at the front which is perfect for enjoying a morning coffee whilst listening to the sounds of the ocean.

On the first floor there are three bedrooms, each with built-in wardrobes. Two of the bedrooms have direct access via sliding doors to the balconies that are on both the northern and southern side of the property. The spacious main bedroom with ensuite bathroom is on the northern side and benefits from plenty of sunlight in the morning. The family bathroom is centrally located and offers a bath and shower.

This complex also has a pool to enjoy after days on the beach. The dog beach is across the road, it doesn't get any better than this! Not to mention footsteps from The Treehouse Cafe and Restaurant for morning coffee or live music and dinner at night this location is Byron's best kept secret.

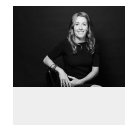
Council Rates: \$3,154.50 p/a
Strata Fees: \$1,500 per quarter
Designated undercover car space

Please call Tara Torkkola or Sally Green for your private tour today!



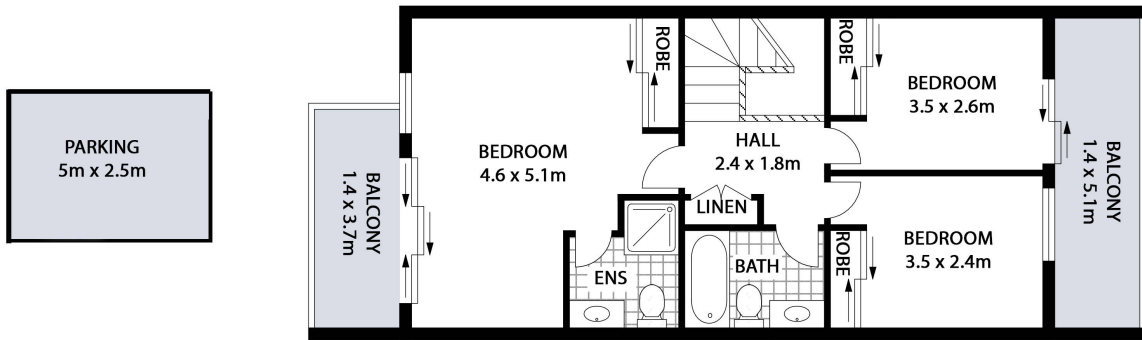
Tara Torkkola

Sales
0423 519 698

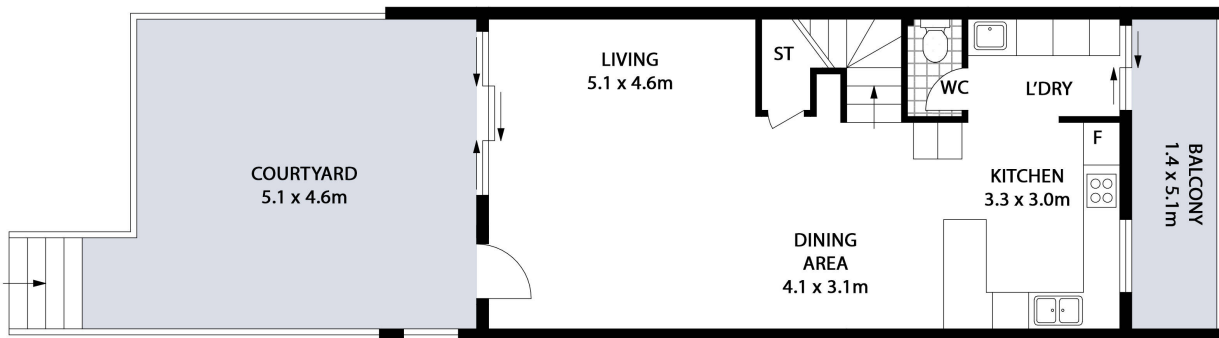


Sally Green

Sales
0488 030 116



FIRST FLOOR



GROUND FLOOR



5/37 CHILDE STREET, BYRON BAY
INTERNAL: 108m² | EXTERNAL: 49m²

FIRST NATIONAL BYRON
YOUR HOME | YOUR LIFE | YOUR STORY

Scale in metres. Indicative only. All information contained herein is obtained from sources we believe to be accurate. We cannot guarantee its accuracy. Interested persons should make and rely on their own enquiries. This plan is a representation of the buildings on site and not an indication of council approval. Floorplan as illustration only – all figured dimensions approximate – do not scale – no liability accepted

