



Stylishly Renovated Home in Popular Suffolk Park

\$1.695M - \$1.85M

Positioned on an elevated 711sqm block in popular Suffolk Park is this stylishly renovated, spacious home with beautiful established and edible gardens. This contemporary home is only minutes to surf beaches, local schools and shops which appeals to growing families and investors alike.

With a generous floor-plan the home offers two living areas and an open plan kitchen and dining area. The stunning kitchen features beautiful cabinetry, stone bench-tops, a butler's pantry and breakfast bar that overlooks the living and dining area. Opening through large timber doors is the covered patio which is the perfect place to relax and entertain.

Outdoors is a private oasis with landscaped gardens, veggie patches and a chicken pen where you can enjoy farm to table growing.

Equipped with 3 spacious bedrooms the main includes a walk-in-robe, additional built-in robe and a private ensuite making it the perfect parents retreat. Each bedroom has ducted aircon or a fan and there is a well-appointed, modern family bathroom with designer details.

In a fantastic position just moments from world-class beaches, schools, shopping center's and Byron Bay township, this home is ideal for those seeking a convenient home close to all amenities.

Other Features:

- Solar panels
- Solar hot water
- Zip tap in kitchen
- Waterfall feature
- Veggie gardens
- Ducted air-conditioning throughout



Su Reynolds

Director | Sales | Chief
Cultural Officer
0428 888 660



Renee Schofield

Sales - Su Reynolds Team
0400 028 594



First National Byron
The value of trust

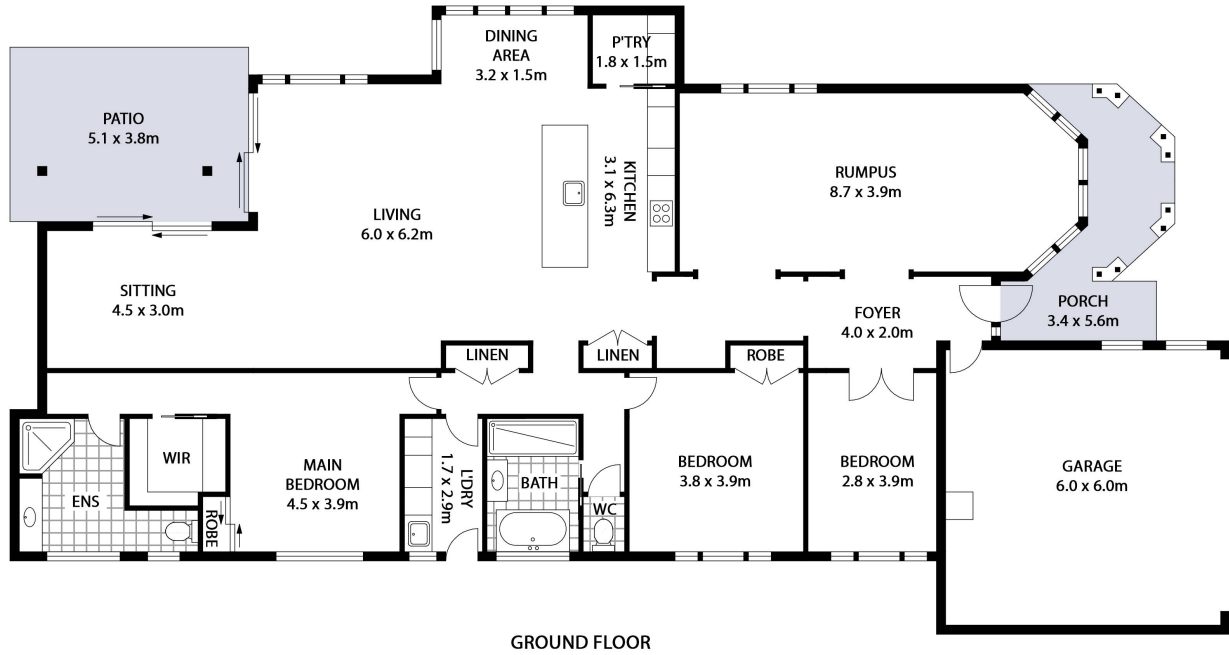
77 Beech Drive, Suffolk Park NSW 2481

House: 3 beds 2 baths

Remote controlled double garage
Established edible gardens
Two large living rooms

To schedule a private viewing of this property contact Su Reynolds or
Renee Schofield today.

Council Rates: \$3,580.60 p/a



77 BEECH DRIVE, SUFFOLK PARK
INTERNAL: 238m² | EXTERNAL: 32m²

FIRST NATIONAL BYRON
YOUR HOME | YOUR LIFE | YOUR STORY

Scale in metres. Indicative only. All information contained herein is obtained from sources we believe to be accurate. We cannot guarantee its accuracy. Interested persons should make and rely on their own enquiries. This plan is a representation of the buildings on site and not an indication of council approval. Floorplan as illustration only – all figured dimensions approximate – do not scale – no liability accepted

