



Boundary lines are approximate

Masterfully Built Home Moments from the Beach with Luxury Features and Unparalleled Design

\$2.65M - \$2.85M

With every modern luxury and convenience this master built home is just moments from the beach and offers a relaxed, beachside lifestyle. This architectural masterpiece encompasses a new level of luxury with features such as timber cladding, copper detailing, engineered lighting, masonry craftsmanship and exquisite landscaping elevating this home to a level of its own.

With high quality in its forefront this impeccable home has premium finishes throughout including blackbutt timber flooring, louvers, high ceilings and an abundance of natural sunlight filtering through. The open floorplan offers an expansive kitchen with stone benches, high end appliances and island bench with breakfast bar which adjoins the dining and living areas.

The living and dining feature a stunning stone wall with fireplace and reading nook, opening through large bifold doors you are welcomed onto the expansive outdoor entertaining deck with outdoor kitchen and views of the pristine plunge pool making it the perfect space to entertain family and friends.

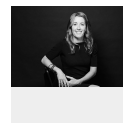
Each bedroom is oversized and luxuriously appointed to welcome the coastal breezes. All bedrooms have built-in wardrobes and ceiling fans, whilst the master boasts a gorgeous ensuite with walk-in robe and access to a private deck.

South Golden beach is a relaxed, quiet area with beautiful beaches and is situated just 15-20 minutes north of Byron Bay and a stones throw away from the Booming Brunswick Heads. This home is not only an architectural masterpiece but is congenitally located moments from the beach offering you a fantastic lifestyle. Contact Tara and Sally today to arrange a private inspection.



Tara Torkkola

Sales
0423 519 698



Sally Green

Sales
0488 030 116

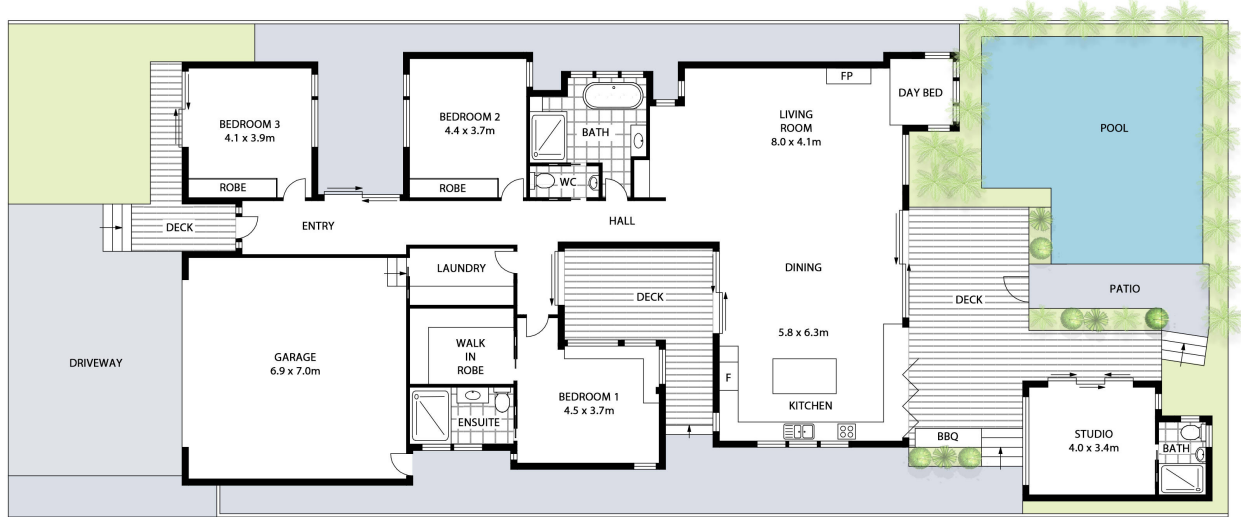


First National Byron
The value of trust

11 Gloria Street, South Golden Beach NSW 2483

House: 4 beds 3 baths

Council Rates: \$3,263.00 p/a



11 GLORIA STREET, SOUTH GOLDEN BEACH

INTERNAL: 258m² | EXTERNAL: 88m²

Scale in metres. Indicative only. All information contained herein is obtained from sources we believe to be accurate. We cannot guarantee its accuracy. Interested persons should make and rely on their own enquiries. This plan is a representation of the buildings on site and not an indication of council approval. Floorplan as illustration only – all figured dimensions approximate – do not scale – no liability accepted

