



Luxury Tallow Beach Home: 8 Bedrooms 5 Bathrooms Bordering Arakwal National Park with Direct Access to the Ocean

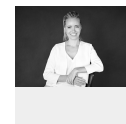
\$4M - \$4.4M

Superbly situated on beachfront Tallow Beach spanning across 749m² is this Masterbuilt luxury 8 bedroom abode with approved dual occupancy providing an abundance of opportunity. Surrounded by the Arakwal National Park on two sides, adjacent to the beach track at the end of a cul de sac in sought after Beachcomber Drive. Very rare blue chip location with grand infrastructure and unsurpassed floor space ready for versatile living. Seamless indoor-outdoor living taking in the best of Byron Bay's world class beaches yet moments from town.

The ground level has 4 bedrooms and 2 bathrooms with an abundance of natural sunlight filtering through. Perfect for multi-generational living with separate access to upstairs its so private.

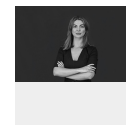
Upstairs is the epitome of luxury and offers a generous open plan chefs kitchen, living and dining area. The kitchen has a large island bench with breakfast bar, opening through large doors to the expansive entertaining deck with sweeping views of National Parkland. The deck overlooks the saltwater pool perfect to host gatherings with family and friends where you feel like you're on vacation all year round. 4 bedrooms including master suite/parents retreat, multi-purpose rumpus room with access to the resort style pool, and 3 bathrooms. This level has a generous loft off the main living area, perfect for an office space or a place to relax and take in the view night or day. There is a double lockup garage and off-street parking for additional cars.

This beach house allows you to enjoy morning and afternoon walks/fishing and surfs all from your doorstep through the National Park this is a resort style home and all year round holiday home. Family living at its best in arguably one of the best streets in Byron Bay where the locals live and where ocean activities are footsteps away.



Tara Torkkola

Sales
0423 519 698



Jasmin McClymont

Sales
0434 029 668



Undeniably an exclusive address and sought after location with Arakwal National Park bordering two sides you have the best of both privacy and beachfront living. Enjoy direct beach access along the adjacent track through the National Park. Byron town centre is just a 3-minute drive or bike ride, where you can enjoy the buzzing town centre with restaurants, cafes markets and then come home and relax in your resort style luxury abode.

A home of this proportion and infrastructure in this sought-after location rarely comes to market. Please call Jasmin and Tara to arrange your private tour of this exceptional luxury beach house today.

Rates: \$7,707.80 pa



36 BEACHCOMBER DRIVE, BYRON BAY

INTERNAL: 394m² | EXTERNAL: 88m²

Scale in metres. Indicative only. All information contained herein is obtained from sources we believe to be accurate. We cannot guarantee its accuracy. Interested persons should make and rely on their own enquiries. This plan is a representation of the buildings on site and not an indication of council approval. Floorplan as illustration only – all figured dimensions approximate – do not scale – no liability accepted

