

## Unique Elevated Lot with Swimming Hole with Amazing Potential

Contact Agent

This is a great opportunity to own a unique, elevated and private 1.5ha lot surrounded by the upper reaches of the Brunswick River. Roll up your sleeves for a renovation rescue project on this humble house in need of lots of love. Alternatively, build your dream home to make the most of this stunning setting on the large, elevated house site – there is huge potential either way.

The expansive lot is perfectly positioned in a picturesque location just minutes to Mullumbimby and Main Arm. There is an abundance of space for horses, pets, fruit trees and veggie gardens, as well as beautiful swimming holes to enjoy.

An idyllic property perfect for a creative thinker looking for a unique setting.

For a private inspection contact Paul Prior today.

Council Rates: \$1,675.00 p/a

### Upcoming inspection

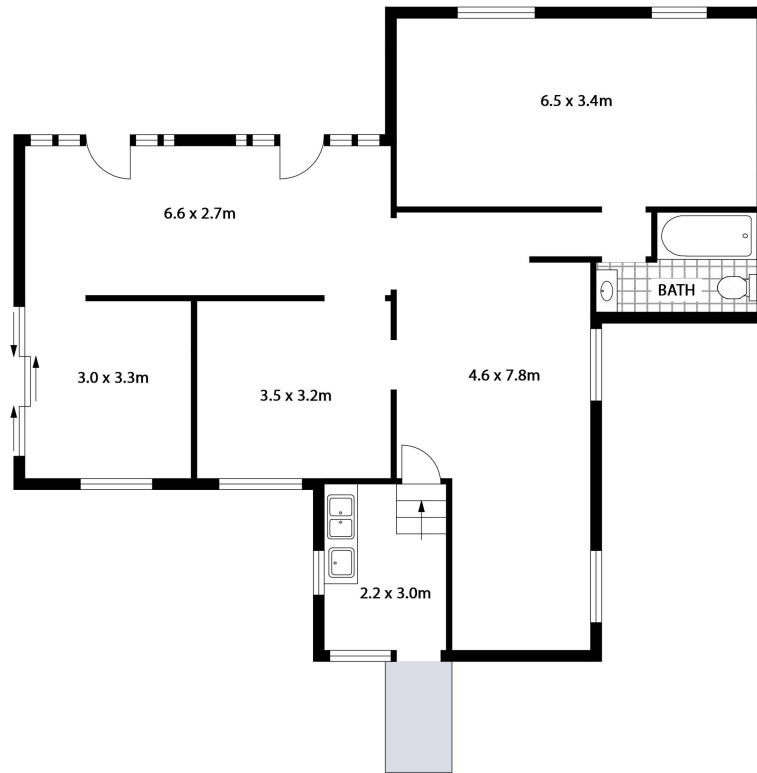
Friday 26 July 12:00 pm - 12:30 pm  
Saturday 27 July 2:30 pm - 3:00 pm



**Paul Prior**  
Sales  
0418 324 297



**Sharon McInnes**  
Sales  
0408 659 649



**GROUND FLOOR**



**1 SETTLEMENT ROAD, MAIN ARM**

**INTERNAL: 97m<sup>2</sup>**

**FIRST NATIONAL BYRON**  
YOUR HOME | YOUR LIFE | YOUR STORY

Scale in metres. Indicative only. All information contained herein is obtained from sources we believe to be accurate. We cannot guarantee its accuracy. Interested persons should make and rely on their own enquiries. This plan is a representation of the buildings on site and not an indication of council approval. Floorplan as illustration only – all figured dimensions approximate – do not scale – no liability accepted

